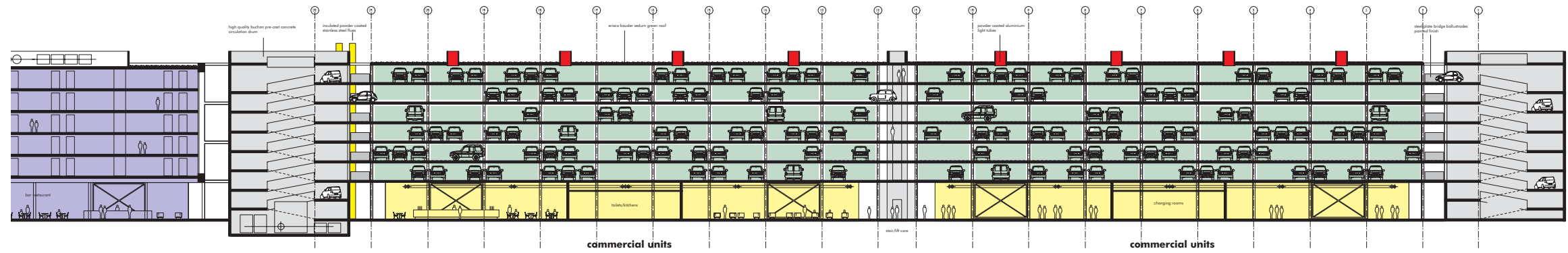
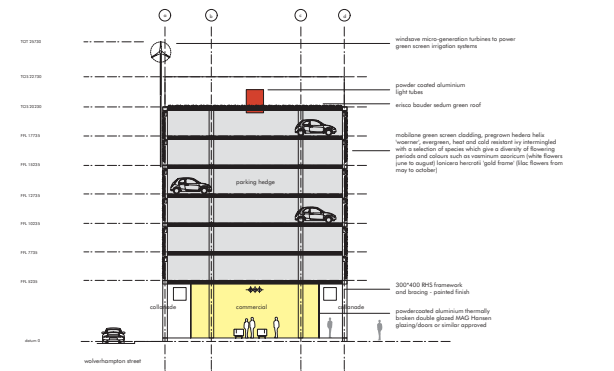


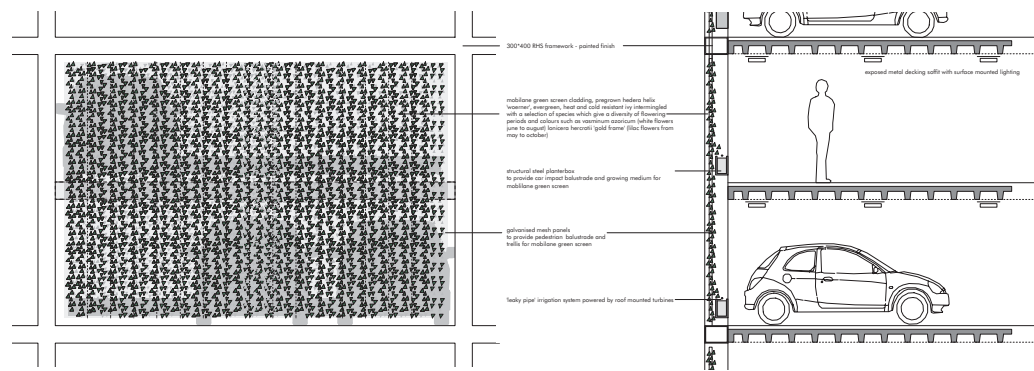
wolverhampton street elevation



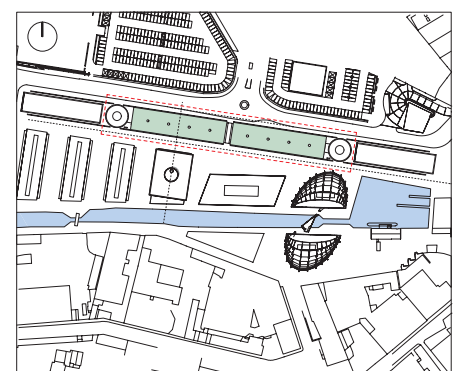
long section



cross section



detail section/elevation



site plan



The parking hedge is an exposed steel box frame structure with insitu concrete slab floors giving 630 parking spaces over six floors. A precast concrete drum with a steel and insitu concrete ramp to the west of the building forms the entrance and an identical drum ramp to the east creates the exit, both on to Wolverhampton street.

The grown evergreen ivy is trained up mesh panels to form an instant 'green' free venting walls, which are supplemented by a selection of species which give a diversity of flowering periods and colours. An irrigation system maintains the planting all year round and is powered by wind turbines on the sedum roof (a green roof which maintains its appearance all year round, requires little maintenance and is very hardy). Together they form a parking structure with a living/growing facade - hence the 'parking hedge'.

The ground floor contains over 15,000 sq ft of double height, double glazed commercial space that is accessible from Wolverhampton street and the new canal basin. The steel frame forms a colonnade with the units set back from the line of structure, and allows several points for pedestrian movement in and out of the site.

The energy centre for the entire site is located in the base of the eastern ramp drum.

A precast concrete central stair and lift core connects the two segments of the parking hedge together and gives access to all the parking levels from a ground floor glazed lobby accessible from either side of the colonnade.

parking hedge	003
planning application	1:250 @ A1
walsall waterfront	

Do not scale from this drawing. All dimensions are to be checked on site prior to commencing work. Any discrepancy found between information given on this drawing and that given elsewhere on the site shall be notified immediately to the project architect in writing.

shedkm

shedkm

URBAN SPLASH